

DIAPHRAGM



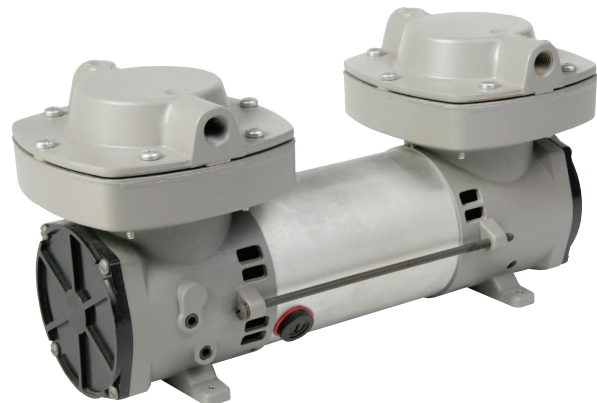
910 & 2907 SERIES

MODELS

910CDC22/12
2907CDC22/12



910CDC22/12



2907CDC22/12

FEATURES

- Oil-less operation
- Permanently lubricated bearings
- Field service capability
- Stainless steel valves and aluminum valve plate
- Lightweight die-cast aluminum head and diaphragm hold down plate
- Long-life diaphragm
- Inlet filter
- Balanced for smooth, low vibration operation
- Replaceable brushes (910 only)
- Service Kit [SK927](#) (910 only)

Consult factory for custom applications

Thomas Division is an ISO 9001 registered company


THOMAS
A Gardner Denver Product

USAThomas.com

(800) 799-4568 | 3810 Prospect Ave, Ste. A, Yorba Linda, CA 92886

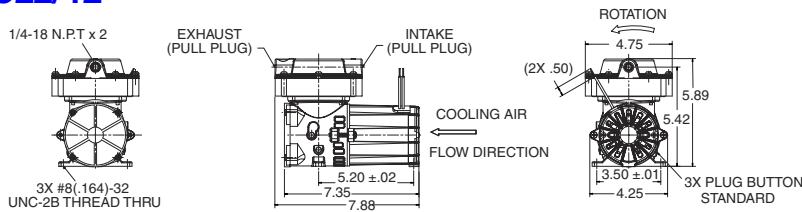
910 & 2907 Series Performance Data

| MODEL NUMBER | | 910CDC22/12 | | 2907CDC22/12 | |
|---------------------------------------|--------------------|------------------|----------|------------------|-----------|
| HEAD CONFIGURATION | | Pressure/Vacuum | | Pressure/Vacuum | |
| STROKE | | .220 Inches | | .220 Inches | |
| PRESSURE | | Flow @ 12v | | Flow @ 12v | |
| CFM @ PSI | LPM @ bar | | | | |
| PSI | bar | CFM | LPM | CFM | LPM |
| 0 | 0 | 1.97 | 55.8 | 3.20 | 90.6 |
| 5 | .5 | 1.72 | 45.5 | 2.89 | 77.2 |
| 10 | 1.0 | 1.47 | 37.0 | 2.53 | 63.5 |
| 15 | 1.5 | 1.29 | 29.7 | 2.21 | |
| 20 | 2.0 | 1.10 | 23.7 | | |
| 25 | 3.0 | .95 | 10.4 | | |
| 30 | 5.0 | .79 | | | |
| 35 | 7.0 | .64 | | | |
| 40 | 10.0 | .48 | | | |
| MAX. CONTINUOUS PRESSURE | | 25 PSI | 1.7 bar | 15 PSI | 1.0 bar |
| MAX. INTERMITTENT PRESSURE | | 40 PSI | 2.8 bar | 15 PSI | 1.0 bar |
| VACUUM | | Flow @ 12 v | | Flow @ 12 v | |
| CFM @ IN. hg | LPM @ mbar (gauge) | | | | |
| IN. hg | mbar (gauge) | CFM | LPM | CFM | LPM |
| 0 | 0 | 1.97 | 55.8 | 3.20 | 90.6 |
| 5 | -100 | 1.53 | 48.4 | 2.00 | 70.5 |
| 10 | -200 | 1.05 | 40.9 | 1.43 | 53.7 |
| 15 | -400 | .65 | 25.6 | .90 | 35.1 |
| 20 | -600 | .28 | 12.7 | .41 | 17.9 |
| MAX. VACUUM | | 24.3"hg | -824mbar | 24.0" hg | -813 mbar |
| MAX. AMBIENT AIR TEMP. | | 104° F | 40°C | 104° F | 40°C |
| MIN. AMBIENT START TEMP. | | 50° F | 10°C | 50° F | 10°C |
| MAX. RESTART PRESSURE | | 20 PSI | 1.4 bar | 15 PSI | 1.0 bar |
| MAX. RESTART VACUUM | | 24.3"hg | -824mbar | 24.0" hg | -813 mbar |
| MOTOR VOLTAGE/FREQUENCY | | 12v DC | | 12v DC | |
| MOTOR TYPE | | Permanent Magnet | | Permanent Magnet | |
| CURRENT AT RATED LOAD (AMPS) | | 12.8 | | 20.0 | |
| POWER AT RATED LOAD (WATTS) | | | | | |
| STARTING CURRENT (LOCKED ROTOR, AMPS) | | 96.6 | | 120.0 | |
| MIN. FULL LOAD SPEED (RPM) | | 2160 | | 1900 | |
| THERMAL PROTECTOR | | No | | No | |
| NET WEIGHT | | 8.25 lbs. | 3.7 kg | 11 lbs. | 5.0 Kg |

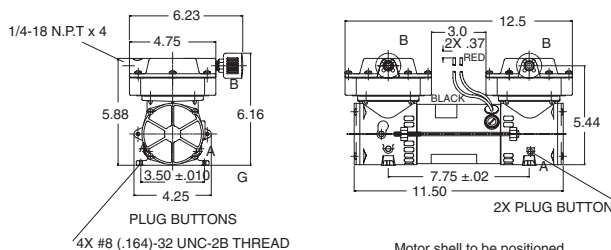
The information presented in this material is based on technical data and test results of nominal units. It is believed to be accurate and reliable and is offered as an aid to help in the selection of Thomas products. It is the responsibility of the user to determine the suitability of the product for his intended use and the user assumes all risk and liability whatsoever in connection therewith. Thomas Industries does not warrant, guarantee or assume any obligation or liability in connection with this information.

NOTE: Models pictured are representative of the series and do not represent a specific model number. Consult factory for detailed physical description.

910CDC22/12



2907CDC22/12



Printed in U.S.A. Form No. 850-3327 11/11
©2007 Gardner Denver Thomas, Inc. All rights reserved.

THOMAS
A Gardner Denver Product